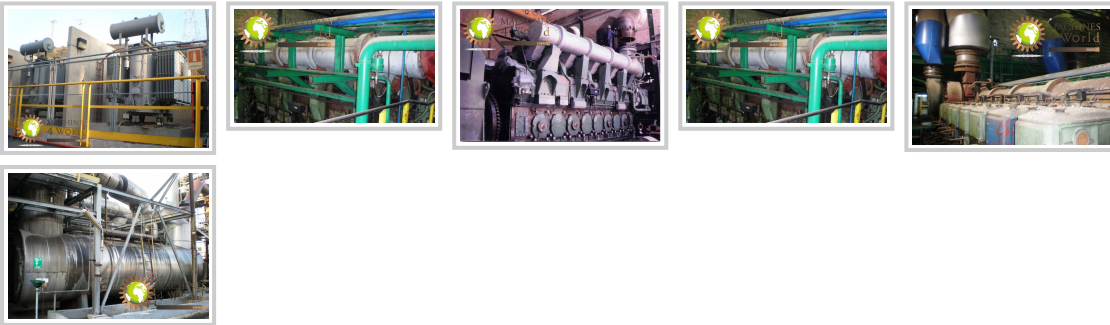


## PLANT OF CO-GENERATION WITH GENERATORS DIESEL OF 12 MW

### General Specifications:

- **Type:** 12 MW CO-GENERATION PLANT
- **Manufacturer:**
- **Model:**
- **Manufacturing date:**

### Images:



### Specifications:

Cogeneration plant complete with 12 MW diesel engines.

Main equipment:

- 2 February 1996 of 5,760 KW each type 8 ZAL 40 S Sulzer diesel engines.
- 2 Electric generators.
- 1 Recovery of gases and steam-generating boiler.